








CENTRAL PARK

BEIJING, CHINA

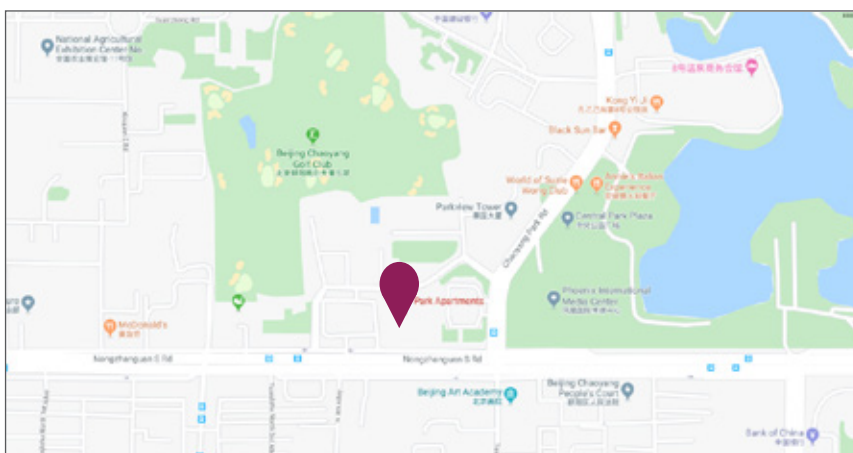
PROPERTY OVERVIEW

Introducing the Central Park apartments in Beijing, China. This monumental development includes 12 high-rise buildings in the heart of Beijing's central business district. It is considered to be one of the most popular housing options for expats due to its ideal location and the luxurious and convenient lifestyle it provides for its guests. With high-end amenities and a large central garden, this is the perfect spot to keep guests entertained. These apartments are also within walking distance of the West Nanjing Road Station, making travel a breeze.

AMENITIES

-  Pool
-  Air Conditioning
-  Gym
-  Elevators
-  Parking

MAP



For more information,
please contact us at:

EMAIL:
CorporateHousingAPAC@dwellworks.com



CENTRAL PARK

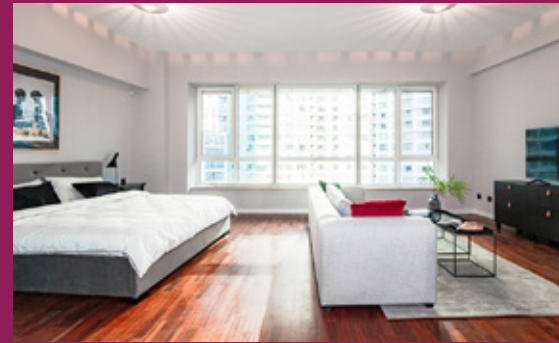
BEIJING, CHINA

APARTMENT OVERVIEW

This apartment in Beijing CBD offers a bright and open studio layout. With its tall windows, guests will find the view fascinating! It is adorned by contemporary furniture to make anyone feel right at home. Guests will have everything they need in this compound and surrounding areas, including restaurants, shops, supermarkets, and banks.

APARTMENT AMENITIES

- | | |
|--|--|
|  Studio & 3BD |  Stove |
|  1 Bathroom |  Oven |
|  High-Speed Internet |  Microwave |
|  Cable TV |  Dishes |
|  Flat Screen TV |  Kitchen Utensils |
|  Washer & Dryer | |



For more information,
please contact us at:

EMAIL:

CorporateHousingAPAC@dwellworks.com

**Photographs of apartments represent the standard features and amenities available at the property, but may not be the actual apartment allocated upon check in.*